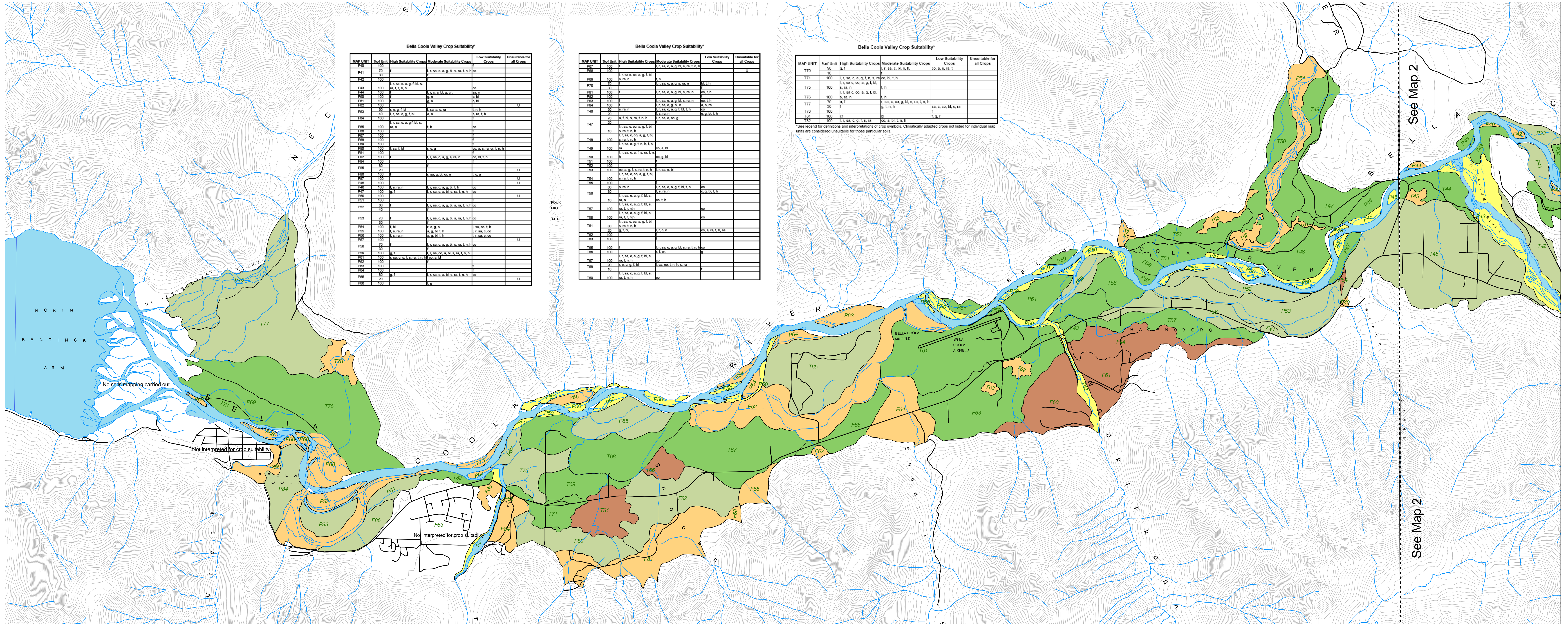


Bella Coola Valley Crop Suitability

A Project of the Bella Coola Valley Sustainable Agricultural Society



Bella Coola Valley Crop Suitability*

MAP UNIT	Soil Unit	High Suitability Crops	Moderate Suitability Crops	Low Suitability Crops	Unsuitable for all Crops
P41	100				
P42	30				
P43	100	f, m, n, s, ra, t, n, h			
P44	100	sa, c, co, m, n, h			
P45	100				
P46	100				
P47	100				
P48	100				
P49	100				
P50	100				
P51	100				
P52	100				
P53	100				
P54	100				
P55	100				
P56	100				
P57	100				
P58	100				
P59	100				
P60	100				
P61	100				
P62	100				
P63	100				
P64	100				
P65	100				
P66	100				
P67	100				
P68	100				
P69	100				
P70	100				
P71	100				
P72	100				
P73	100				
P74	100				
P75	100				
P76	100				
P77	100				
P78	100				
P79	100				
P80	100				
P81	100				
P82	100				
P83	100				
P84	100				
P85	100				
P86	100				
P87	100				
P88	100				
P89	100				
P90	100				
P91	100				
P92	100				
P93	100				
P94	100				
P95	100				
P96	100				
P97	100				
P98	100				
P99	100				
P00	100				

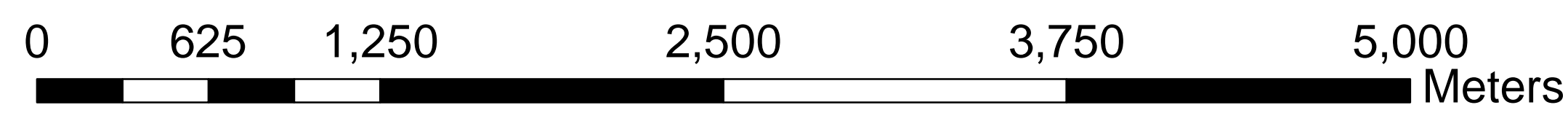
Bella Coola Valley Crop Suitability*

MAP UNIT	Soil Unit	High Suitability Crops	Moderate Suitability Crops	Low Suitability Crops	Unsuitable for all Crops
T70	100				
T71	100				
T72	100				
T73	100				
T74	100				
T75	100				
T76	100				
T77	100				
T78	100				
T79	100				
T80	100				
T81	100				
T82	100				
T83	100				
T84	100				
T85	100				
T86	100				
T87	100				
T88	100				
T89	100				
T90	100				
T91	100				
T92	100				
T93	100				
T94	100				
T95	100				
T96	100				
T97	100				
T98	100				
T99	100				
T00	100				

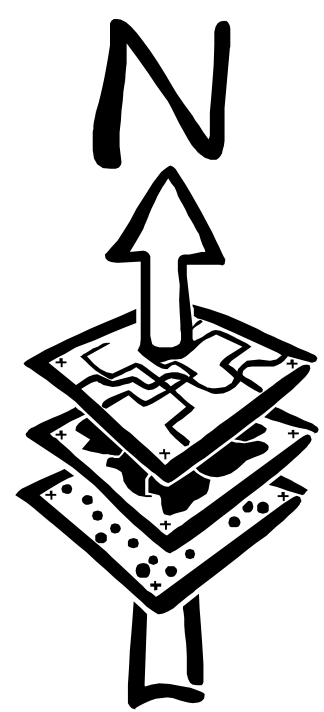
Bella Coola Valley Crop Suitability*

MAP UNIT	Soil Unit	High Suitability Crops	Moderate Suitability Crops	Low Suitability Crops	Unsuitable for all Crops
T70	100				
T71	100				
T72	100				
T73	100				
T74	100				
T75	100				
T76	100				
T77	100				
T78	100				
T79	100				
T80	100				
T81	100				
T82	100				
T83	100				
T84	100				
T85	100				
T86	100				
T87	100				
T88	100				
T89	100				
T90	100				
T91	100				
T92	100				
T93	100				
T94	100				
T95	100				
T96	100				
T97	100				
T98	100				
T99	100				
T00	100				

See legend for definitions and interpretations of crop symbols. Climatically suited crops not listed for individual map units are considered unsuitable for those particular soils.



1:20,000



This map should be used in conjunction with Bella Coola Valley Crop Suitability report as amended March 2008 and 'Soils of the Bella Coola Valley' (2007) Expanded Legend and Data Spreadsheet.

Base Maps: 93D 36 - 40, 45 - 50

Map 1 of 2

Legend

Generalized Crop Suitability

- Wide range of cropping options with dominantly high and moderate crop suitability
- Wide range of cropping options with dominantly moderate and low crop suitability
- Moderate range of cropping options
- Narrow range of cropping options or dominantly low crop suitability
- No cropping options
- Road
- 20 m contour
- River / Ocean

Crop Suitability*

H High suitability indicates those crops that are well suited to the soils and climate and require few management inputs to achieve an acceptable level of production.

M Moderate suitability indicates those crops that are moderately well suited to the soils and climate and require some management inputs to achieve an acceptable level of production.

L Low suitability indicates those crops that are not well suited to the soils and climate and require a considerable degree of management inputs to achieve an acceptable level of production.

U Unsuitable for all crops

Climatically Suited Crops**

l Annual Legumes (peas, beans)

r Root Crops (beets, carrots, parsnips, potatoes, radishes, bulb onions and turnips)

sa Shallow Rooted Annual Vegetables (salad crops, including lettuce, spinach, parsley, celery and green onions)

c Cole Crops (broccoli, Brussels sprouts, cabbage, cauliflower, and kale)

co Corn

a Asparagus

g Cereal Grains (barley, fall rye, oats, wheat and winter wheat)

f Perennial Forage Crops (grass and grass clover)

bl Blueberries and Currants

s Strawberries

cr Cranberries

ra Raspberries (including blackberries, loganberries and tayberries)

t Tree Fruits (apples, cherries, plums and pears)

n Nursery Stock and Christmas Trees

h Hazelnuts

* Crop suitability definitions and interpretations based on and adapted from 'Soil Management Handbook of the Lower Fraser Valley' (Second Edition), BC Ministry of Agriculture, Fisheries and Food, Abbotsford, 1991. (N.B. Crop suitability is not an interpretation of economic feasibility for commercial production.)

** Excluding those crops considered limited to small scale, home or hobby garden production. See Bella Coola Valley Crop Suitability report as amended March 2008.

Project Coordination:
Gary Runka, P.Ag., BCVSAS Foodshed Subcommittee Chair

Crop Suitability Interpretation by:
Gary Runka P.Ag. and Joan Sawicki

Funding provided by:
Investment Agriculture Foundation
Real Estate Foundation of BC

TRIM base maps permission of:
Central Coast Regional District,
member of Integrated Cadastral Information Society



Map created by:
Hans Granander, RPF
Frontier Resource Management Ltd.
April, 2008