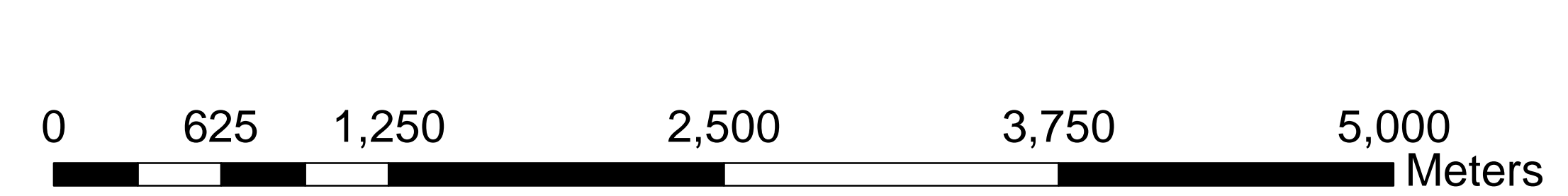
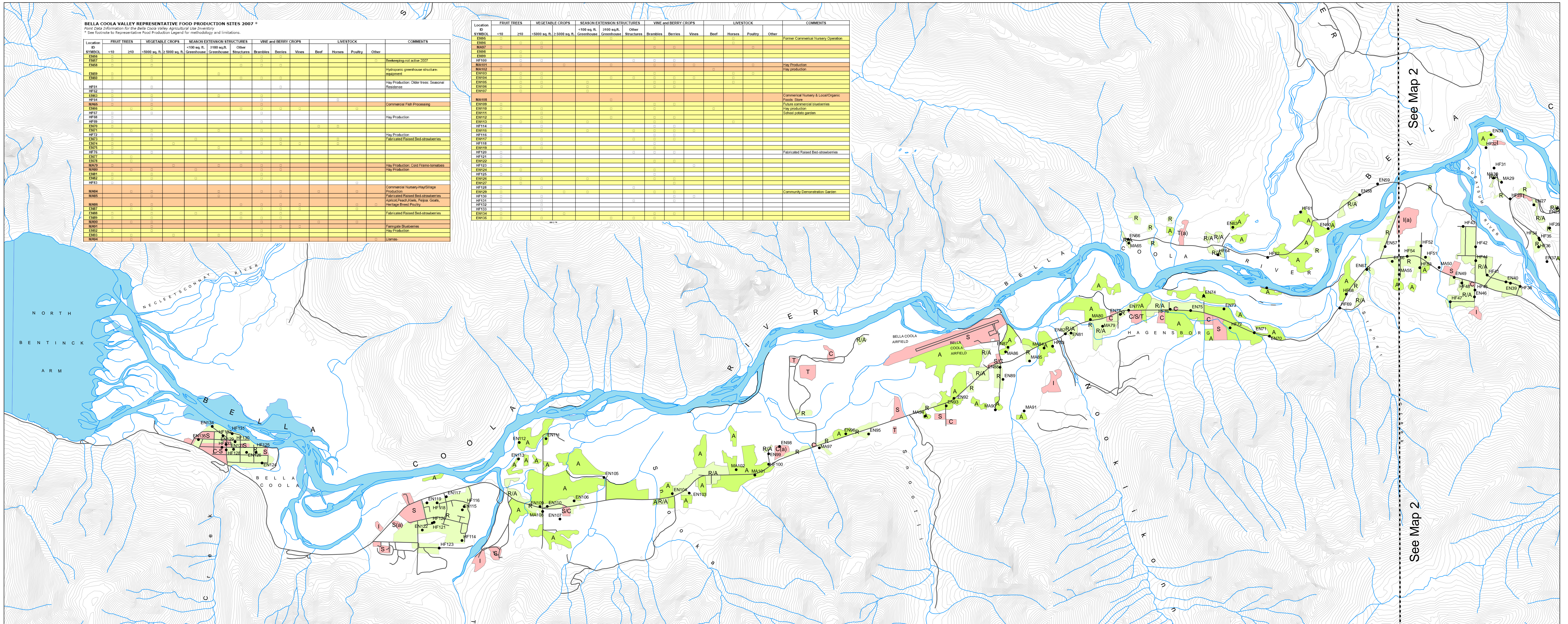
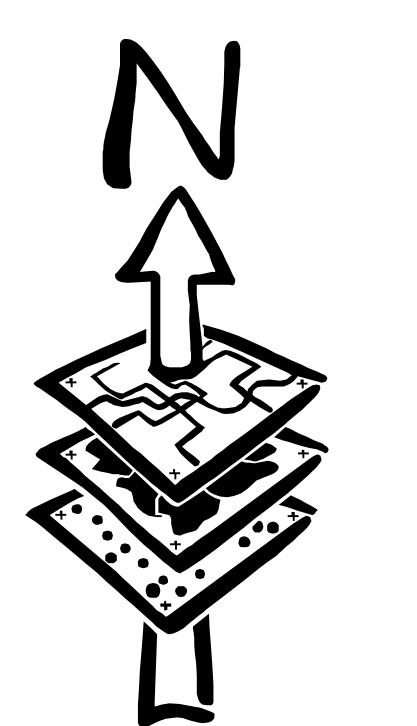


Bella Coola Valley Agricultural Use Inventory

A Project of the Bella Coola Valley Sustainable Agricultural Society



1:20,000



Legend	
—	Road
—	20 m contour
—	River / Ocean

Base Maps: 93D 36 - 40, 45 - 50

Map 1 of 2

Generalized Land Use Inventory*

- A Agricultural** (dominantly forage with associated residential and including vacant cleared land with evidence of previous forage use)
- R Residential** (dominantly residential with associated small-scale food production and/or home business)
- R/A Residential/Agricultural** (intermixed use areas and/or residential use with significant associated agricultural activity)
- C Commercial** (retail goods and services, including private campgrounds)
- S Service/Institutional** (including schools, airport, fish hatchery and other public buildings or facilities)
- I Industrial** (including aggregates)
- T Recreational** (including public picnic areas and rodeo grounds)

(a) Abandoned former use

*NOTE:
 1. This generalized land use inventory was carried out at a scale of 1:20,000, using 2006 air photograph interpretation, a ± 2 acre (0.8 ha) minimum polygon size and limited ground walking.
 2. The primary focus was on cleared land with evidence of food production or agricultural activity; the map does not reflect forested grazing use nor all forested residential uses.
 3. Given the scale of mapping and small-scale nature of most food production within the study area, this map should be used in conjunction with associated point data representative of food production and agricultural activity during the 2007 growing season.

Representative Food Production 2007*

- HF32 GPS point ID symbol
- HF** (Household Food Production) – food production at a predominantly household scale of endeavour
- EN** (Extended Network Food Production) – a diversity of agricultural activities and/or food production sufficient for extended family or neighbourhood sharing with periodic surplus product available for sale
- MA** (Market-oriented Agriculture) – significant food production and/or agricultural activity on a scale intended to generate product for off-farm sale

*NOTE:
 1. This food production survey was carried out utilizing roadside observation methods (via vehicle over most of the study area; via foot in the more settled portions) and personal interviews whenever possible.
 2. Sites recorded on the map are only intended to be representative of scale and scope of food production and do not include all sites documented in the survey.
 3. Given the limitations of point data surveys, this information should be used in conjunction with associated land use mapping, which identifies general areal extent of lands used for agricultural/food production purposes in 2007.

Project Coordination:
 Gary Runka, P.Ag., BCVSAS Foodshed Subcommittee Chair

Representative Food Production Site Inventory by:
 DeLisa A Lewis, Ph. D. candidate, UBC

Generalized Land Use Inventory by:
 Joan Sawicki, Gary Runka and DeLisa Lewis

Funding provided by:
 Investment Agriculture Foundation
 Real Estate Foundation of BC

TRIM base maps permission of:
 Central Coast Regional District,
 member of Integrated Cadastral Information Society



Map created by:
 Hans Granander, RPF
 Frontier Resource Management Ltd.
 July, 2008